

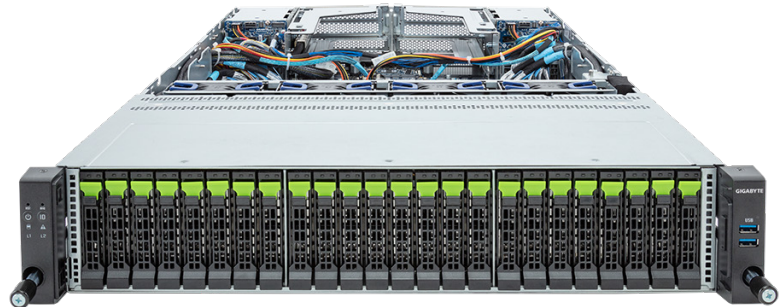
Altus XE2312v2 Server

A Versatile 2U Server for HPC, Enterprise,
and Hyper-Scale Deployments

Key Features

- ▶ 2U rackmount form factor
- ▶ Dual AMD EPYC™ 9005 Processors at up to 500W each for high-performance configurations
- ▶ Up to 24 DDR5-6000 MT/s ECC memory modules to deliver speed and efficiency for data-intensive workloads
- ▶ Storage density for 24 x 2.5" hot-swap NVMe U.2 drive bays and 4 x 2.5" SATA/SAS drive bays

Modern data centers need flexible computing resources that can be deployed at scale. The Penguin Computing Altus XE2312v2 server provides dual AMD EPYC™ 9005 processors, fast and efficient memory, and up to 24 x 2.5" drive bays for flexible and dense storage. Powered with the latest and most powerful generation of processors available today, and offering dense storage in a single server, the Altus XE2312v2 is an optimal platform for data center and HPC deployments at scale.



Technical Specifications		
Form Factor		
Form factor	2U Rackmount	
Processors		
Processor Number	2	
Processor Type	AMD EPYC 9005	
Maximum TDP	cTDP Up to 500W	
Motherboard		
Chipset	SoC	
Board Management		
BMC Chipset	ASpeed AST2600	
Dedicated BMC Interface	RJ45	
IPMI 2.0	Yes	
Virtual Media Over LAN	Yes	
KVM Over LAN	Yes	
RedFish	Yes	
Memory		
Memory Type	DDR5-6000 MT/s	
Memory Capacity	Up to 6TB (24 DIMMs)	
Storage System		
Hard Drive Bays	SATA (2.5")	4 Hot-Swappable
	U.2 NVMe (2.5")	24 Hot-Swappable
	M.2 (2280/22110)	2 PCIe Gen3
Networking		
Ethernet Controller	Intel® i350-AT2	
On-Board LAN	2x 1GbE/RJ45	
PCI Expansion Slots		
Number of Slots/Gen/Speed (Size)	1x PCIe Gen5 x16 FHHL	
MEZZANINE EXPANSION OPTIONS		
OCP Mezzanine	Storage OCP Mezz	N/A
	Network OCP Mezz	1x PCIe Gen5 x16 OCP3.0 Slot
External I/O Interfaces		
USB Ports	4 x USB 3.2	
VGA Ports	1x MiniDP	
Supported Operating System		
Supported OS	RHEL, Rocky	
Power System		
Power Supply Size	2x 2000W 80Plus Titanium	
Regulatory Compliance		
Regulations	CE, FCC	

Mounting Hardware	
Rackmount Rails	Standard Rails included
Operating Environment	
Operating Temperature	10C to 35C (50F to 95F)
Non-operating Temperature	0C to 60C (32F to 140F)
Operating Relative Humidity	30% to 80% (non-condensing)
Non-operating Relative Humidity	20%-95% (non-condensing)
System Dimensions & Weight	
Height	3.4 inches
Width	17.2 inches
Depth	32.1 inches
Warranty	
Warranty	3 Year Standard; Up to 4 years on-site available